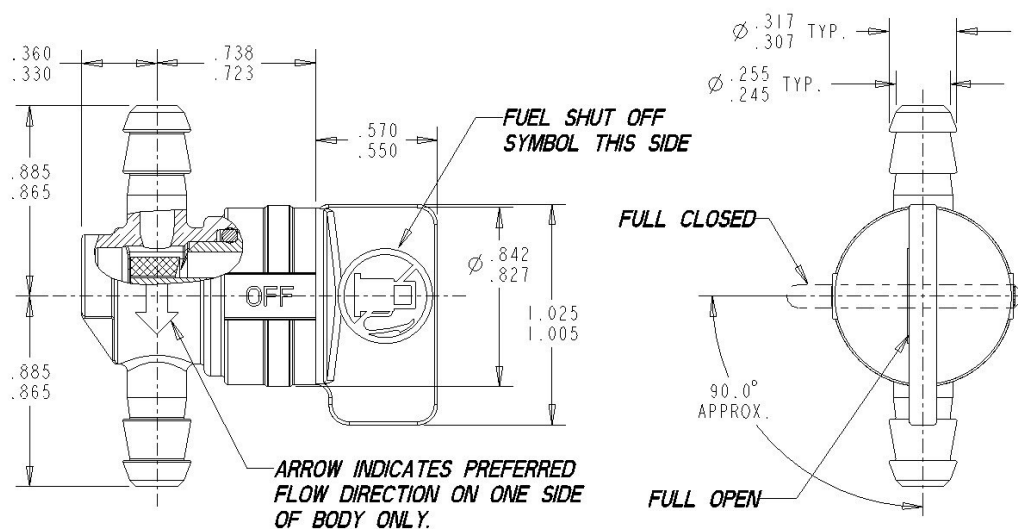
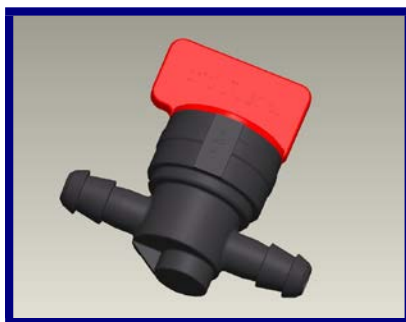


Q-Turn Valve

Precision Quarter-Turn Fuel Valves

Part No. 7423

TECHNICAL SPECIFICATION



Performance Properties		Typical Value
Connection method		1/4 inch inside diameter tubing
Temperature range		-30°C (-22°F) to 80°C (176°F)
Component materials	Spindle	Red Nylon (for quick identification)
	Body	Black Heat-Stabilized Nylon
	Sealing Bushing	Nitrile Rubber
	O-Ring	Fluorosilicone
Flow Rate of Valve ³		5.5 gallons per hour

1. Valves are 100% leak tested in the 'ON' (open) and 'OFF' (closed) positions with 10psi air pressure.
2. Valves are shipped in the 'OFF' (closed) position.
3. Valve flow rate = 5.5gph at 3.5in. fluid head using water or fluid with equivalent viscosity.
4. Valves open and close easily with a 1/4 (quarter) turn of the red spindle in the direction indicated above.

This document and its contents contain proprietary information of Fastex Filtration a Division of the Illinois Tool Works Inc. The document and information are to be held in confidence and must not be described, copied or shown, in whole or in part, without the express written permission of ITW Fastex Filtration.